



Polaris Outlaw 450 & 525: SRA

Center Mount Installation: Slip On System



Please Read Carefully

Read all instructions before installation. Make sure the vehicle and exhaust system are completely cool & on level ground before installation. You should have some mechanical knowledge and a basic set of tools. (A lift, center or rear stand will help.) We advise that this installation be done by a qualified technician. If this is a street vehicle, you may need to modify or replace your stock license plate bracket and turn signals. Please consult your local dealer. Check your local laws to make sure you are in compliance. HMF is not responsible if you are not.

Stock Slip On Removal

1. Remove the **Stock Silencer** and **Gasket** from the **Head Pipe**.
2. Remove the **Starter Relay** located on the back of the **Battery Box**.
3. The new mounting location is shown in Figure 2.

HMF Slip On Installation

1. Use the supplied **Bracket** and hardware to mount the **Starter Relay** in its new location. (See Figures 3 & 4)
2. Zip tie any wires that have extra slack.
3. Slide the **Clamp** over the **HMF Silencer Inlet**. Then, slide it onto the **Stock Head Pipe**.
4. Mount the **Silencer** behind the **Rubber Mounts** on the **Subframe**. Use the **Large Fender Washer** on the other side of the **Rubber Mount**. (See Figure 5)
5. Align and center the **Silencer** and tighten.

Recommended Jetting Specs: 150 Keihin Hex

These settings are to be used as a starting point and were determined on our dyno at 900ft - 60°F. The final tuning is up to the customer. For more information about tuning, visit www.HMFracing.com.

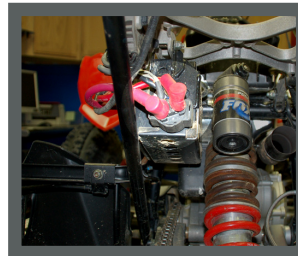


Figure 1

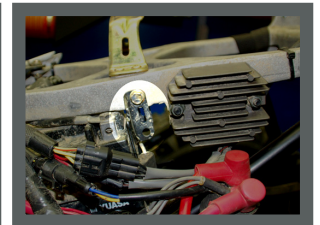


Figure 2



Figure 3

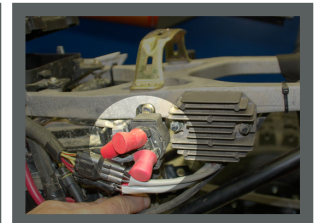


Figure 4

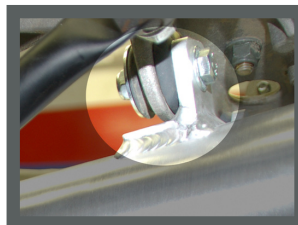


Figure 5

Warranty Information

All HMF exhaust systems are covered by a limited warranty described on the enclosed warranty card. Mapping/Jetting and installation are the responsibility of the customer. HMF Performance exhausts are designed for closed-course competition use only.

Having trouble? We can help.

If you're still having trouble with your installation, visit www.HMFracing.com and contact us by e-mail, Forums, or by calling 866.HMF.PIPE



This exhaust, EFI Controller, air filter, jet kit is not intended for use/sale in California and does not meet California, Federal, EPA, CARB noise or emission standards for on road/highway, public, private or state land and is prohibited for use by Federal law. This exhaust, EFI Controller, air filter, jet kit is intended for use in "closed course competition off road racing use only" on machines which do not fall under the California, Federal, EPA, CARB noise or emission standards. Modifications which exceed California, Federal, EPA, CARB noise or emission standards on non "Closed course competition off road racing use only" vehicles is prohibited by Federal law. FOOTNOTE: 2006 and newer motorcycles with head/tail lights OEM from the manufacturer and every all terrain vehicle, even those intended for off road closed course competition use, are considered California, Federal, EPA CARB noise or emission controlled vehicles. Vehicle emission control information is noted in the owners manual and on the machine air box lid and exhaust muffler. Any modifications which exceed the California, Federal, EPA, and CARB noise or emission standard is prohibited by Federal LAW.



Polaris Outlaw 450 & 525: SRA

Side Mount Installation: Slip On System



Please Read Carefully

Read all instructions before installation. Make sure the vehicle and exhaust system are completely cool & on level ground before installation. You should have some mechanical knowledge and a basic set of tools. (A lift, center or rear stand will help.) We advise that this installation be done by a qualified technician. If this is a street vehicle, you may need to modify or replace your stock license plate bracket and turn signals. Please consult your local dealer. Check your local laws to make sure you are in compliance. HMF is not responsible if you are not.

Stock Slip On Removal

1. Remove the **Stock Silencer** and **Gasket** from the **Head Pipe**.

HMF Slip On Installation

1. Remove the three bolts on the rear of the **Subframe**.
2. Assemble the **Bracket** and **Spacers** as shown in Figure 1 & 2.
3. Slide the **Clamp** over the **Silencer Inlet** and slide it onto the **Stock Head Pipe**.
4. Bolt the **Bracket** to the **Silencer**.
5. Align and center the **Silencer** and begin to tighten.



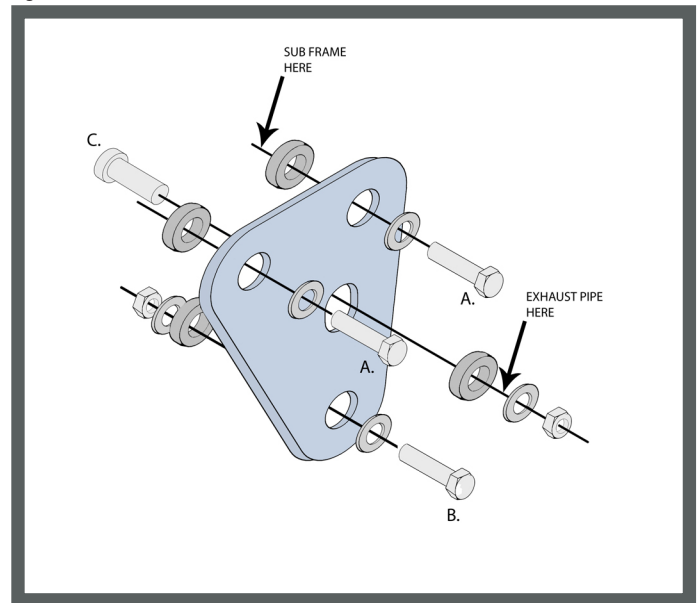
Figure 2

Recommended Slip On Jetting Specs:

150 Keihin Hex

These settings are to be used as a starting point and were determined on our dyno at 900ft - 60°F. The final tuning is up to the customer. For more information about tuning, visit www.HMFRacing.com.

Figure 1



Bolt Kit

- | | |
|--------------------------|-------------------|
| A. (2) M8 x 25 HEX BOLTS | (4) 1/4" SPACERS |
| B. (1) M8 x 45 HEX BOLT | (2) M8 NYLOC NUTS |
| C. (1) M8 x 40 HEX BOLT | (6) 3/8" WASHERS |

Warranty Information

All HMF exhaust systems are covered by a limited warranty described on the enclosed warranty card. Mapping/Jetting and installation are the responsibility of the customer. HMF Performance exhausts are designed for closed-course competition use only.

Having trouble? We can help.

If you're still having trouble with your installation, visit www.HMFRacing.com and contact us by e-mail, Forums, or by calling 866.HMF.PIPE



This exhaust, EFI Controller, air filter, jet kit is not intended for use/sale in California and does not meet California, Federal, EPA, CARB noise or emission standards for on road/highway, public, private or state land and is prohibited for use by Federal law. This exhaust, EFI Controller, air filter, jet kit is intended for use in "closed course competition off road racing use only" on machines which do not fall under the California, Federal, EPA, CARB noise or emission standards. Modifications which exceed California, Federal, EPA, CARB noise or emission standards on non "Closed course competition off road racing use only" vehicles is prohibited by Federal law.

FOOTNOTE: 2006 and newer motorcycles with head/tail lights OEM from the manufacturer and every all terrain vehicle, even those intended for off road closed course competition use, are considered California, Federal, EPA CARB noise or emission controlled vehicles. Vehicle emission control information is noted in the owners manual and on the machine air box lid and exhaust muffler. Any modifications which exceed the California, Federal, EPA, and CARB noise or emission standard is prohibited by Federal LAW.